



Professional Equestrian Irrigation

Content

Driving irrigation beam COMFORT AQUAMOBIL	4
Irrigation Tube System KLASSIK PLUS	12
Führanlagen- und Longierhallenberechnung	20
Irrigation for outdoor areas	24
Mobile irrigation machines	28



We, the BUCHHOLZ Maschinen und Pumpen GmbH, are known for being the market leader in equestrian-irrigation-systems and for our impeccable product quality and our constant efforts for new innovations. Our top-selling irrigation, the driving irrigation system COMFORT AQUAMOBIL, is the ultimate system of this branch and is based on our decades-long experience. Founder Norbert Buchholz is Diplom-Ingenieur (comparable to a Master of Engineering) for agriculture, outside expert on water technology and passionate horse breeder, while having had success in equestrian tournaments himself in his youth. He connected those passions and developed as early as 1986 the first indoor irrigation system.

Today we are very honored by the many certificates and prizes we were given by impartial bodies and committees. Especially rewarding is the positive feedback we get from our customers, that show their happiness by an unusually high recommendation rate.

Have a look for yourself and be inspired by our broad possibilities!

COMFORT AQUAMOBIL

The perfection in indoor-irrigation since 1995!

This highly innovative, fully automated irrigation system is very popular. Due to our constant efforts of innovating and optimizing it even further, the COMFORT AQUAMOBIL is and stays a benchmark in the indoor-irrigation-branch. The sales-numbers confirm: the COMFORT AQUAMOBIL is the **most sold driving indoor-irrigation-system of all time!**



Einziges gepr. Hallenberegung
in Deutschland
**Höchste
Gleichmäßigkeit**
Geprüft und zertifiziert
von der FAL Braunschweig

COMFORT AQUAMOBIL



Nozzle-beam - the clou of our system

The special construction achieves a 100% equal sprinkling pattern and can be mounted in a lot of different indoor riding areas with varying ceiling heights. The aluminum construct is only 60 mm in width, assuring an aesthetically pleasing look. The nozzle-beams width is always 8 m less than the riding hall, wich opens many possibilities when planning the height of the beam and is especially important for riding halls with wooden beams or other parts that influence the height where the system should be mounted.



Precision-nozzle

A high-resolution, very precise industry-nozzle with special membrane technology that prevents dripping after the irrigation process. The nozzle-caps are fitted with a quick-close-technique that makes the cleaning or changing of single nozzles especially easy.



Special hoofbeat-nozzle

Where is the most water needed? At the hoofbeat! And where the littlest? At the boards! The outer 4 m of the left and right side of your area will be irrigated by these special nozzles, that can be adjusted perfectly to your hoofbeat due to the 45° spraying angle.

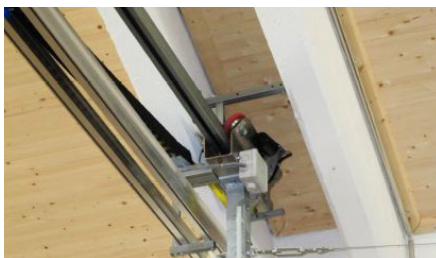


Driving unit

The construction of the driving unit inside of the aluminum casing is crucial for the reliability of the COMFORT AQUAMOBIL, while the 4 wheels on top of the driving beam allow for a swinging motion, preventing the beam from stopping too early or getting stuck along the way. The unit is powered by 24V low-voltage, wich eliminates possible dangers when using. The integrated cruise control makes for a consistent spray pattern and ensures, that the wanted speed stays consistend aswell.



COMFORT AQUAMOBIL



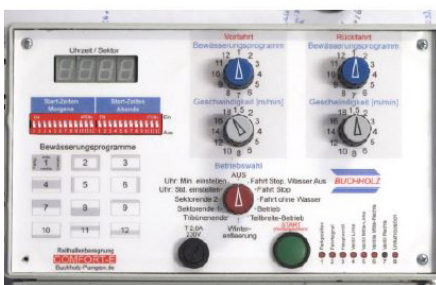
Driving rail and energy chain canal

The self-supporting galvanized rail is designed trapeze-shaped and prevents a tilt or stoppage of the motor unit, even with forces from the side. This „swing-effect“ is a high-quality feature! The tread of the wheels is rippled, which ensures full power during operation. The funnel-like design of the aluminum canal makes sure that the energy chain operates accurately, while the 2-parts-construction with an open lower part prevents dust and dirt from building up.



Energy chain

Compact, robust, aesthetically pleasing. The energy chain made of surge-up-safe plastics ensures a low unwind-radius and stores the water hose and control cables. This makes the system look more subtle and protects from usage marks or damage on the hose.



Analog control

The analog control is especially robust and easy to use. It provides 12 different presets with adjustable speeds between 1-18m/min that can be adjusted individually for driving along and back the rail. You can start the irrigation process manually by pushing a button or automatically with the integrated timer. A specially developed program for frost protection helps with the emptying process if needed.



Touchdisplay

With the compact 5,7" touchdisplay in a high-grade steel casing you add additional sectors that can be irrigated separately from each other. Its handling is very intuitive and it comes with a GSM-module that sends updates and operation states directly to your mobile phone. Additionally, by adding optional functions, you can do a frost-emptying automatically if needed or also a fully automated cleansing of the optional backwashing filter.



*Beauty,
Harmony
& Elegance*



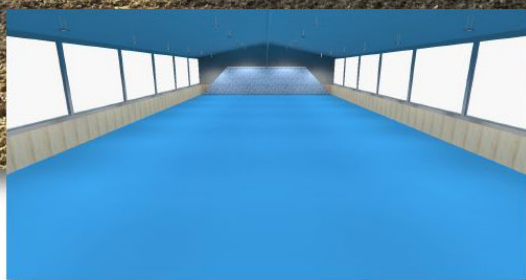
Aesthetically pleasing: The nozzle beam can be mounted in varying heights, which ensures an aesthetic overall look of your riding hall.

COMFORT AQUAMOBIL

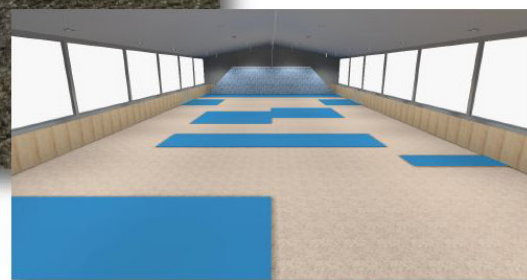
The **consistent all-over irrigation** of the COMFORT AQUAMOBIL is provided by the intelligent construction.

With the **sectional irrigation** you can adjust the watering of those sectors that are most influenced by sun or wind. The standard control of the COMFORT AQUAMOBIL divides your area into 4 sectors that can be irrigated individually. The touch-control even divides it into 5 individual sectors, setting a new benchmark in the equestrian branch.

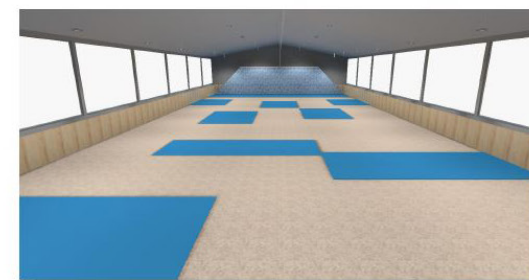
To conclude: The COMFORT AQUAMOBIL provides the optimal solution at all times, adapting to every possible disruptive factors of your riding hall.



Consistent all-over-irrigation



Possible sectors with the standard control



Possible sectors for the touch-control



KLASSIK PLUS

A well-established system for indoor irrigation with automated technology and modern materials. The KLASSIK PLUS is especially durable and is primarily suited for smaller riding halls or square lunging halls with a more consistent incidence of daylight.

With a lot of additional customization options the KLASSIK PLUS adapts to a number of influencing factors. The system is also suited for self-assembly.



KLASSIK PLUS



Fine-mist-nozzle BU6

A fine-mist-nozzle, self-produced and developed, is the core of the system. With a high durability and precise spraying-characteristics it prevents dripping after the irrigation process with its 177° angle (instead of the common 180°). The extra long thread bundles the water spurt and provides a safer process when attaching or detaching the nozzle.



Automatic emptying valves

The single tubes are mounted in a 5% incline and include a emptying valve at the tube openings. This ensures an automatic emptying of the tubes after every irrigation process.

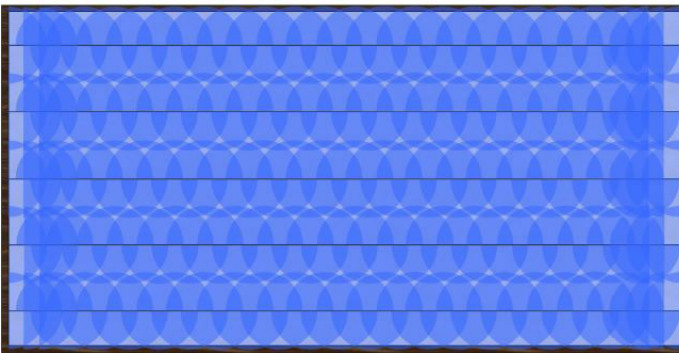


Electric control by 24V magnet valves

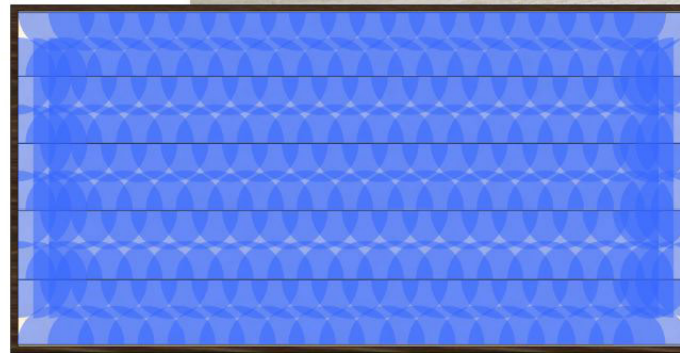
Every nozzle tube is equipped with a 24V magnet valve at its infeed, connected to a central computing unit. This way you can program every nozzle tubes watering duration individually or just control them independently.



KLASSIK PLUS - Spray pattern



Standard spray pattern of the
KLASSIK PLUS



Spray pattern of the KLASSIK PLUS with
optimized watering of the hoofbeat

KLASSIK PLUS - Extra equipment



BUCHHOLZ ADVANCE control instead of standard control

- beste Qualität aus eigener Fertigung
- besonders empfehlenswert bei wechselnden Bedienern
- kinderleichte, intuitive Bedienung
- selbsterklärend durch übersichtliche, analoge Schalter
- serienmäßig mit integrierter Zeitschaltuhr



In comparison: standard control



Additional nozzle tube

(Example for a 20 m riding hall: 6 tubes instead of 5)

- optimierte Beregnung des Hufschlags an der langen Seite
- genauere Abgrenzung von Hufschlag und Bande
- flexiblere Beregnung durch eine zusätzliche Sektion



PVC-emptying system instead of emptying the tubes individually

- Bundles the emptying process to a single drain
- Controlled drainage to a single point
- Optically more subtle and aesthetic





Walking system and lunging hall irrigation


Fully covered, partially covered or open walking systems - we will find an individual solution for every facility or system.

For round lunging halls we propose our overhead-irrigation with a special lunging hall gear sprinkler and the BUCHHOLZ angled nozzle. It can be adjusted in diameter, varying between 15 and 24 m, and can thus be mounted in nearly every lunging hall there is.

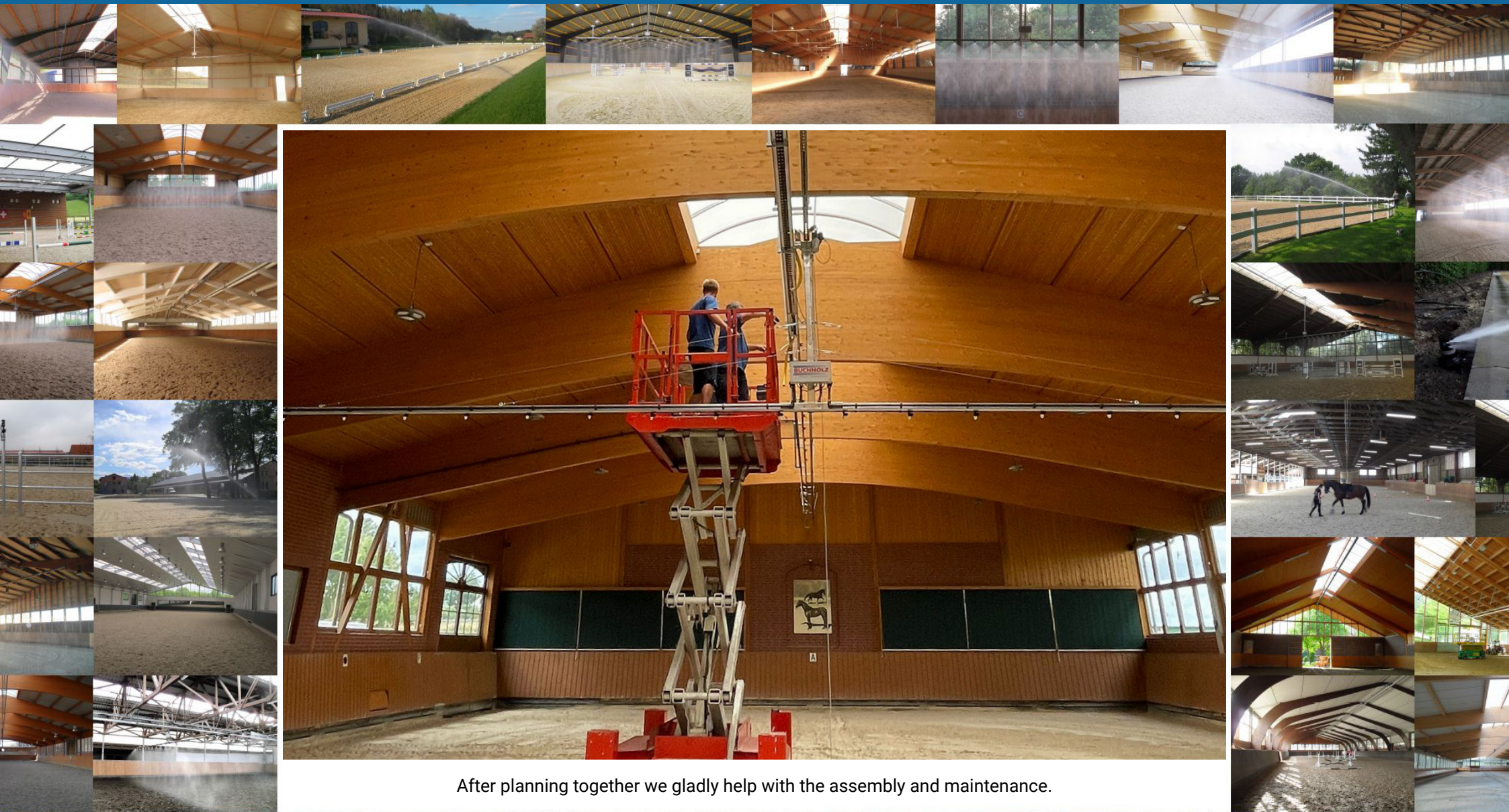
We also provide special solutions for walking systems with an inner lunging area.

Our irrigation systems for walking systems and lunging halls can be self-assembled.





More than
3000
irrigation systems in
the equestrian branch



After planning together we gladly help with the assembly and maintenance.



Riding ground irrigation

For an especially high step security and ground stability a regular irrigation of grass or sand riding grounds during the vegetation period is vital. A well-timed and continuous watering process during dry periods can only be provided by stationary systems. Irrigating regularly also heightens the durability and avoids unwanted dust.

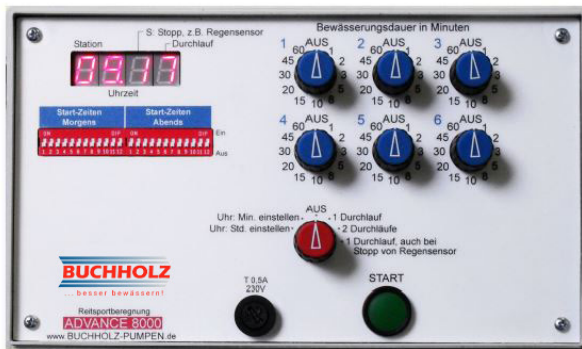


Riding ground irrigation



Riding ground sprinkler

Our riding ground sprinklers are characterized by their high-precision water distribution and their individual customization options through different nozzle implants. Our top-model BU85E with a maximum range of 29 m additionally allows adjusting the angle in which the water is sprayed. This way you can set your water beam to a lower angle, which reduces the susceptibility to stronger winds.



Rain computer BUCHHOLZ ADVANCE

Our riding ground systems are equipped with our practice-oriented BUCHHOLZ ADVANCE computer, that comes with a built-in timer function. Easy to use and very robust!

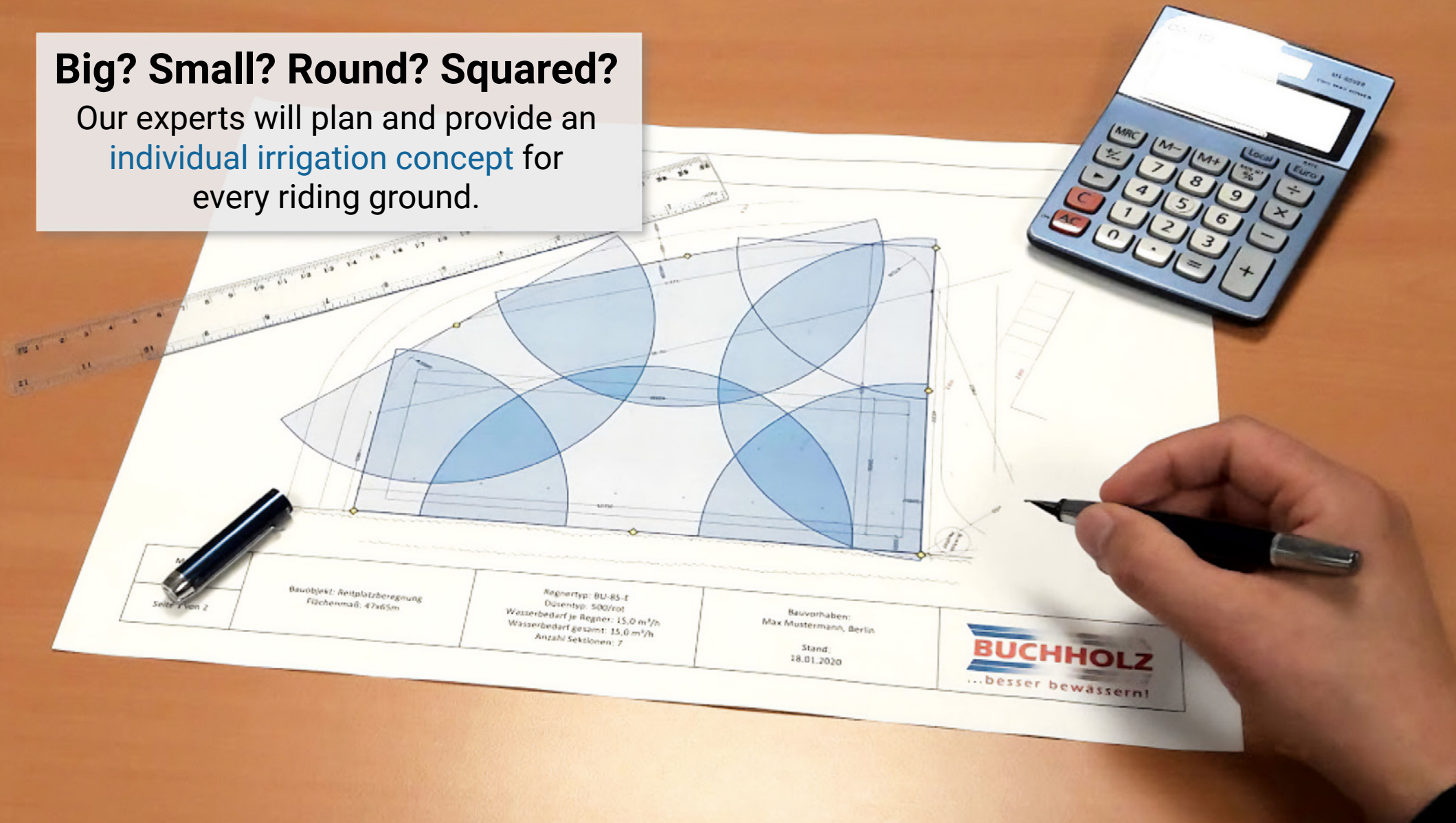


Installment of standpipes

When dealing with a fence, we recommend to install the sprinklers on top of some galvanized standpipes. This way the spray pattern will not get disturbed by parts of the fence, while also securing the fence itself from too much water.

Big? Small? Round? Squared?

Our experts will plan and provide an
individual irrigation concept for
every riding ground.



Mobile irrigation machines

The self-driving BUCHHOLZ mobile irrigation machines are especially handy and easy to use, characterized by their high quality, flexibility and durability.

The newest generation includes three different models, that cover areas of 25 x 65 m up to 50 x 180 m in just a single irrigation run.

An especially low-priced but also effective option for irrigating your outdoor riding grounds is our premium and very flexible BUCHHOLZ trypod product line.



Mobile irrigation machines



Adjustable speed

The intake speed of the sprinkler cart can be adjusted infinitely by lever, covering speeds between 10 and 30 m per hour. This allows for a precise adjustment of the needed amount of water.

Automatic shutdown

Through a robust mechanic the main valve gets closed as soon as the sprinkler cart reaches the hose reel, allowing a carefree use at night. Irrigating during nighttime is extra efficient, as there is less wind or evaporation during later hours.

Adjustable irrigation area

The range of rotation is adjustable aswell and can be set infinitely between 30° and 360° for a partial or an all-around irrigation. Additionally, the spray pattern can be optimized for your needs even further by changing the nozzle and the setting screw, adapting to your water source.





Wasserprinz

Water consumption	1,5 - 2,5 m³/h
Required flow pressure	3,5 - 4,0 bar
Working width	15 - 25 m
Working length	max. 62,5 m
Tube length	50 m
Speed	10 - 30 m/h
Weight (empty)	60 kg



Wasserkönig

Water consumption	3,0 - 4,0 m³/h
Required flow pressure	5,0 - 7,0 bar
Working width	25 - 35 m
Working length	max. 167,5 m
Tube length	150 m
Speed	10 - 30 m/h
Weight (empty)	200 kg



Wasserkaiser

Water consumption	8,0 - 18,0 m³/h
Required flow pressure	5,0 - 8,0 bar
Working width	35 - 40 m
Working length	max. 220 m
Tube length	200 m
Speed	10 - 30 m/h
Weight (empty)	360 kg

BUCHHOLZ

Our products and services:

- ~ Regenmaschinen
- ~ Beregnungsaggregate
- ~ Stromgeneratoren
- ~ Reitsportberegnung
- ~ Schaltkästen u. Steuerungen
- ~ Pumpen und Wasserfilter
- ~ Rohre und Schläuche
- ~ Erdleitungen
- ~ Schlauchhaspeln
- ~ LED-Beleuchtung
- ~ Armaturen und Absperrventile
- ~ Zubehör und Ersatzteile
- ~ Wartungen und Reparaturen



Service and contact:

BUCHHOLZ Maschinen und Pumpen GmbH
Bruchkampweg 34
D-29227 Celle

Tel. +49 (0) 51 41 / 98 91 0
info@buchholz-group.com